

# PRESENTATION OF STANDARD MATERIALS

keraservis

PASOHLÁVKY APARTMENTS

PCD ŽÍMSKÝM  
**VRCHEM**



# ABOUT THE COMPANY

PROFILE

Keraservis has been operating on the Czech market of bathrooms and bathroom equipment since 2000. During the 21 years of existence in the design, solution and implementation of bathrooms and commercial space, Keraservis won its position mainly due to quality services, professional staff and design materials.

The company presents all this in 3 showrooms with a total area of 1,700 m<sup>2</sup> in the Czech Republic - in Prague, Brno and Ostrava, along with one representation in Slovakia in Bratislava.

Quality and design tiles for both walls and floors can be selected from Atlas Concorde, Saime, LOVE or our own Keraservis line. In terms of sanitary ceramics and technology and other bathroom equipment, you can choose products from Villeroy & Boch, Riho, Hüppe, Ravak, FIMA or Gravelli.

Spacious showrooms full of inspiration and highly qualified professionals - this presents Keraservis.



QUALITY  
SERVICES  
AND  
DESIGN  
MATERIAL

## SERVICE IN THE SHOWROOM



# PROCESS OF CLIENT'S SELECTION IN THE BRNO SHOWROOM

As part of the product selection, our professional advisers will be available for you in the Keraservis showroom, which is part of Centrum bydlení a designu Kaštanová.

In a quiet environment, we will also offer you small snacks in addition to advice and expertise.

## CONTACT

By phone or via e-mail, we first agree on the date of the meeting in our showroom.

THE FINAL  
RESULT IS THE  
MATERIALIZATION  
OF YOUR NEEDS  
AND IDEAS.

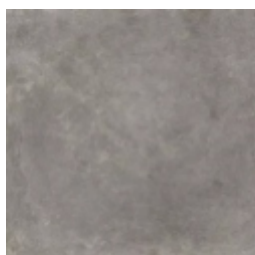
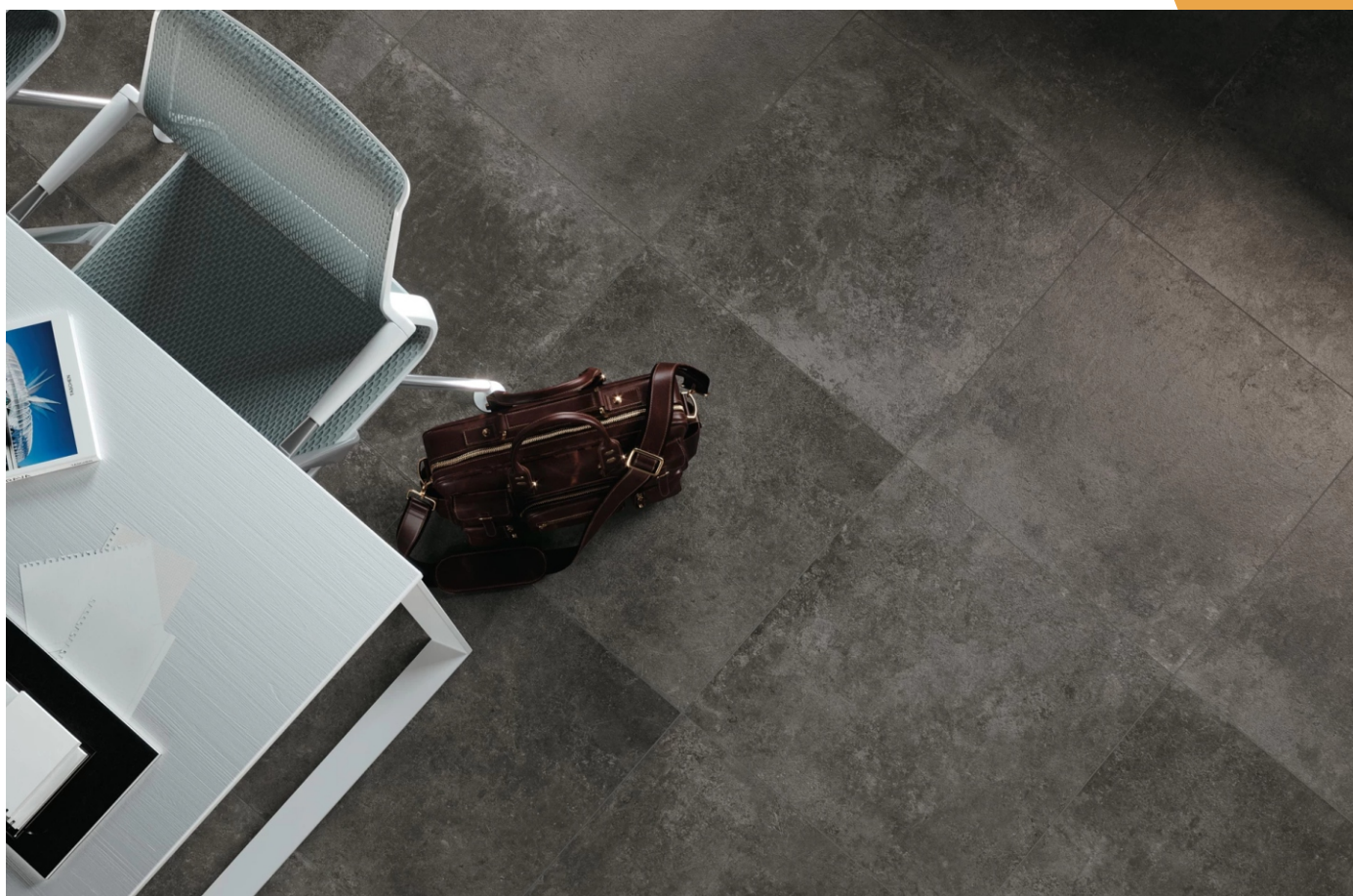
## MATERIAL SELECTION

At the meeting, we will first present you the offer of standard materials. If you would like a wider selection, a Keraservis expert will guide you through the showroom and offer options that would suit your needs. You can draw inspiration from the bathroom cubicles in the two-storey showroom, or from the manufacturers' catalogues. Then we create the final offer - with your already selected materials, colours and sizes taken into account.

## GRAPHIC DESIGN & CALCULATION

Based on the selected material, a final calculation will be prepared for you; in the case of a change in wall and floor tiling, it is also possible to prepare a graphic design

PRESENTATION  
OF WALL  
AND FLOOR TILES



**Gray**  
60 x 60



**Ecrú**  
60 x 60



**White**  
60 x 60

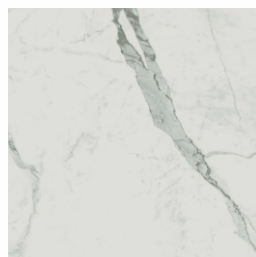


**Anthrazite**  
60 x 60

PRESENTATION  
OF WALL  
AND FLOOR TILES



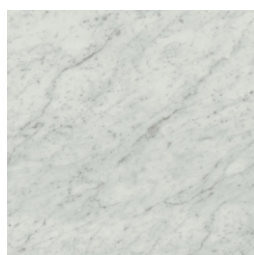
**Calacatta**  
60 x 60



**Statuario**  
60 x 60

PRESENTATION  
OF WALL  
AND FLOOR TILES

 **atlas concorde**

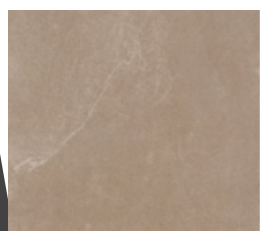


**Carrara**  
60 x 60

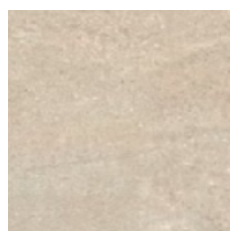


**Jolie Grey**  
60 x 60

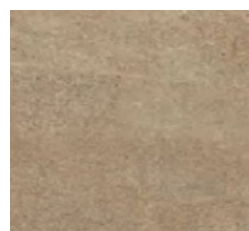
keraservis



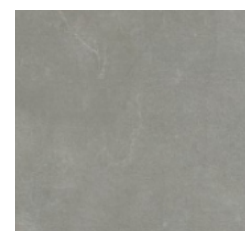
**Beige**  
60 x 60 x 2



**Nature**  
60 x 60 x 2



**Beige**  
60 x 60 x 2



**Grey**  
60 x 60 x 2

**Gerflor®**



**Sunny White**  
1500 x 230 x 2



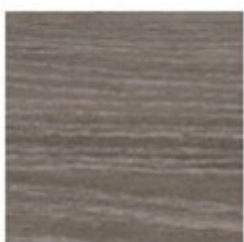
**Linley**  
1500 x 230 x 2



**Sakia**  
1500 x 230 x 2



**Sunny Light**  
1500 x 230 x 2



**Club Grey**  
1500 x 230 x 2



**Club Light**  
1500 x 230 x 2



**Sunny Nature**  
1500 x 230 x 2



**Mikado**  
1500 x 230 x 2

PRESENTATION  
OF SANITARY  
CERAMICS AND  
TECHNOLOGY



Villeroy & Boch Avento  
Washbasin



Villeroy & Boch Avento  
Washbasin Cabinet



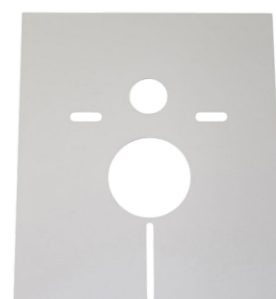
Radiator  
Terma



Ellux Mirror  
80 x 70



Ellux Mirror  
60 x 70



Villeroy & Boch  
Set for Noise Protection



Villeroy & Boch  
Concealed Cistern



Villeroy & Boch  
Control Button



Villeroy & Boch Avento  
Wall-hung Toilet

PRESENTATION  
OF SANITARY  
CERAMICS AND  
TECHNOLOGY



Grohe Rapido  
Concealed Body



Grohe Eurosmart Shower  
Mixer



Riho Hamar  
Shower Screen



Grohe Tempesta Overhead  
Shower with Arm



Grohe  
Rainshower Wall Elbow



Grohe Eurosmart  
Washbasin Faucet



Riho Shower Tray  
90 x 90



Grohe Tempesta  
Shower Set with Bar

SAMPLE  
BATHROOM  
VISUALIZATION

VARIANT I



SAMPLE  
BATHROOM  
VISUALIZATION

VARIANT I



SAMPLE  
BATHROOM  
VISUALIZATION

VARIANT II



SAMPLE  
BATHROOM  
VISUALIZATION

VARIANT II



**SAMPLE  
BATHROOM  
VISUALIZATION**

**VARIANT III**



**SAMPLE  
BATHROOM  
VISUALIZATION**

**VARIANT III**



# PROJECT PARTNER



**The RCJ construction company** specializes in **laying floor tiles** and **installation of wall tiles**. It also has extensive experience with private implementations, generous implementations of public spaces and more demanding projects.

RCJ uses **the latest technology** RCJ používá **nejnovější technologie**. Its workers are regularly trained and have years of crafting experience. They carry out the installation only with the material supplied by them, because this is the only way to guarantee a perfect result and to provide all the guarantees. At Keraservis, you will buy first-class material, which will be carefully installed by our experienced craftsmen.

## **Delivery and instalation of:**

- common formats of wall and floor tiles
- large-format wall and floor tiles (up to 3 x 1.5 m)
- mosaics and luxfers of all kinds and uses
- outdoor terraces on pads, as well as various adhesive systems
- façades with various suspended systems, ceramic materials and clinker tapes



It has also worked on **16 apartment buildings** in Brno and its surroundings, for example on Sadová, Božetěchova, Řípská, Bratislavská streets and in Kaunicův Dvůr in Slavkov. In terms of the terraced construction of family houses, the company participated in the Garden City projects in Brno Líšeň (15 family houses + 26 flats), in Maloměřice (12 family houses) or Blansko (26 family houses). Administrative buildings include the Slatinka Complex (4500 m<sup>2</sup>), Gatema Boskovice (approx. 1000 m<sup>2</sup>) or BMTI, the Grid Hotel at the Brno Grand Prix (approx. 2000 m<sup>2</sup>) and the Pavlov Hotel.

# KITCHEN

Delivery of kitchens in three levels of standard



**SIEMENS**

**AEG**

# KITCHEN



**EGGER** has been a consistently growing and globally operating family business since 1961, based in St. Johann in Tirol in Austria. This brand brings together a **wide range of products** for the production of furniture and interior construction, for structural wood constructions and floors. The group's 18 production plants are located in seven European countries and wood materials are exported worldwide from 26 sales offices.

EGGER is one of the **world's leading manufacturers of wood-based materials**. EGGER products can be found in many areas of private and public life, such as kitchens, bathrooms, bedrooms, offices, hotels and shops. Under the motto **"More from wood"**, the EGGER Group offers, in addition to products in the field of furniture and interior design, also wood-based floors (Laminát, Comfort and Design lines) and construction products suitable for wood constructions.

You can choose from a wide range of **environmentally friendly OSB boards**, from floor boards and boards with straight edges to DHF underlay boards, Ergo Board boards and lumber.



**Sustainable management** is an important part of the EGGER Group's corporate strategy. This effort is also reflected in evaluations from external institutions. EGGER has won two sustainability awards: Prime status from the ISS ESG international rating agency and the EcoVadis silver medal.

# KITCHEN



**Kronospan is a world leader** in the production of wood-based panels for the furniture and construction industries. A total of 42 companies of the Kronospan Group, with operations **worldwide**, form one large family with its own production and technical capacities and have a significant share in improving the quality of housing.

From the very beginning, Kronospan focused on the state-of-the-art method of production. The aim is to **technologically improve** the products so that their production is as efficient and **environmentally friendly** as possible. The company has always worked with the latest technologies at every stage, and it still does. It has invested five hundred million euros in its own development and technology. For example, it has developed a **special UTWS filtration system** that reduces the emissions of organic substances by 95 %. Experts have identified it as **the best technology** in this field. There is nothing better anywhere yet. And Jihlava was the first place where these filters were installed.



The successful history of the Kronospan Group began in **1897** with the operation of a wood sawmill in Lungötz, Austria. This is where the **effort and desire for perfection** arose, which became the credo of the company.

# keraservis

## BRNO



Centrum bydlení a designu Kaštanová  
Kaštanová 515/125a  
620 00 Brno - Tuřany

## OSTRAVA



Krmelínská 780/2  
702 00 Ostrava - Hrabová

## PRAGUE



Centrum Bydlení a designu Křížíkova  
Sokolovská 98/96  
186 00 Praha - Karlín

## CONTACT PERSON

Tomáš Koláček  
+420 725 605 765  
t.kolacek@keraservis.cz  
[www.keraservis.cz](http://www.keraservis.cz)

